

THE GAD REPORT

VOLUME 11, ISSUE 5 MAY 2018

MORE CANDIDATES ANNOUNCE FOR STATE OFFICE

With open seats in the 23rd and 31st Senate districts, and the 68th and 91st Assembly districts, candidates from those areas have been announcing their intentions to run for state office at a fast pace. Here's who has filed with the State Ethics Board to get on the ballot (pending submittal of qualifying signatures by June 1st).

23rd Senate District

With the announcement earlier this year that long-time Senator Terry Moulton would not seek re-election, 68th Assembly Representative Kathy Bernier, who was contemplating retiring herself, announced that she would

seek Moulton's Senate seat. Her Democratic opponent is Chris Kapsner from Boyceville.

31st Senate District

State Senator Kathleen Vinehout is not seeking re-election to her Senate seat as she is running for Governor. Democrats announced for her seat include former state Representative Jeff Smith of Eau Claire, Jon Schultz of Arcadia and Steve Boe of Taylor. A primary for the Democrats will be on Tuesday, August 14th. Green Party candidate Aaron Camacho of Fountain City will be on the ballot as well. For the Republicans, last year's GOP candidate, Mel Pittman of Plum City

has registered to run again.

68th Assembly District

The aforementioned Kathy Bernier is running for state Senate. Seeking to replace her are Jesse James, chief of police for the city of Altoona, running as a Republican, and former Eau Claire School Board commissioner Wendy Sue Johnson, who is an attorney in Eau Claire, running as a Democrat.

91st Assembly District

Eau Claire's Dana Wachs is not running for re-election as he is running for Governor. Looking to fill his seat are Republican candidate Bill Ingram from Durand and Democrats Rich (continued below)

SEVERAL OPEN SEATS IN RANWW JURISDICTION

Postlewaite, Jodi Emerson, former Eau Claire City Council member Eric Larsen, current Eau Claire City Councilman Thomas Vue, with other names in the Eau Claire area likely to be added before signatures need to be turned in. A primary will be held for the

31st Senate and 91st Assembly on August 14th as well.

As of press time for the *GAD Report*, no opponents have been announced for Bob Kulp in the 69th Assembly, Romaine Quinn in the 75th Assembly or Rob Summerfield in the 67th

Districts. The 25th Senate, 29th Assembly, 92nd Assembly and 93rd Assembly all will have contested races this fall.

You have six months to learn all you can about the candidates and where they stand on the issues.



MORE CANDIDATES ANNOUNCE FOR OFFICE	1
WRAS AMBITIOUS LDC GOAL	2
KNOW WHO IS ON THE BALLOT THIS YEAR	2
VOTE, ACT, INVEST ADVOCACY IN ACTION	3
BOYCEVILLE RECEIVES NAR GRANT	4
CAFO PROPOSED FOR AREA NEAR CORNELL	4
MY THOUGHTS	7

WRA'S AMBITIOUS LDC GOAL: 350 MEMBERS



The Large Donor Council has grown over the past decade from a handful of investors statewide to over 220 members last year. RANWW has been among the top three in participation in the Large Donor Council for the last three years.

This year, the statewide goal is much loftier...350 LDC's. So, why the 25% increase?

Wisconsin will find itself

in one of the most competitive election cycles in the nation. From Governor Walker to Attorney General Brad Schimel, Senator Tammy Baldwin, Congressmen Kind and Duffy, half of the state Senate and all 99 Assembly seats, every race is expected to be contested. In the Association's jurisdiction, the 23rd and 31st Senate seats are open, as are the 68th and 91st

Assembly with primaries already needed in the 31st Senate and 91st Assembly.

Advertising will be at a premium later this summer and fall as campaigns make their buys and staff campaigns thru November.

You can make your LDC investments over a period of months and be recognized now as an LDC (more below)

Wisconsin is the only state where 70% of your Large Donor Council investment can be used by the investor for national, state or local candidates

KEEP THIS FOR PRIMARIES & FALL ELECTION CYCLE

My Vote Wisconsin is a state run website that gives you information about who is on the ballot where you live. By adding your address, you can find out where your polling place is, who is on the ballot, and see referendum questions.

Also included:

If you are registered to vote, you can access the fol-

lowing by entering your full name and date of birth:

- View a list of elections you have voted in
- Check your current registration information
- Update your name and address
- Request an absentee ballot
- Find your elected officials

If you would like to find out who's on the ballot where you live, go to the following address for more information:

<https://myvote.wi.gov/en-us/MyVoterInfo>



SUPPORT CANDIDATES THAT SUPPORT REAL ESTATE

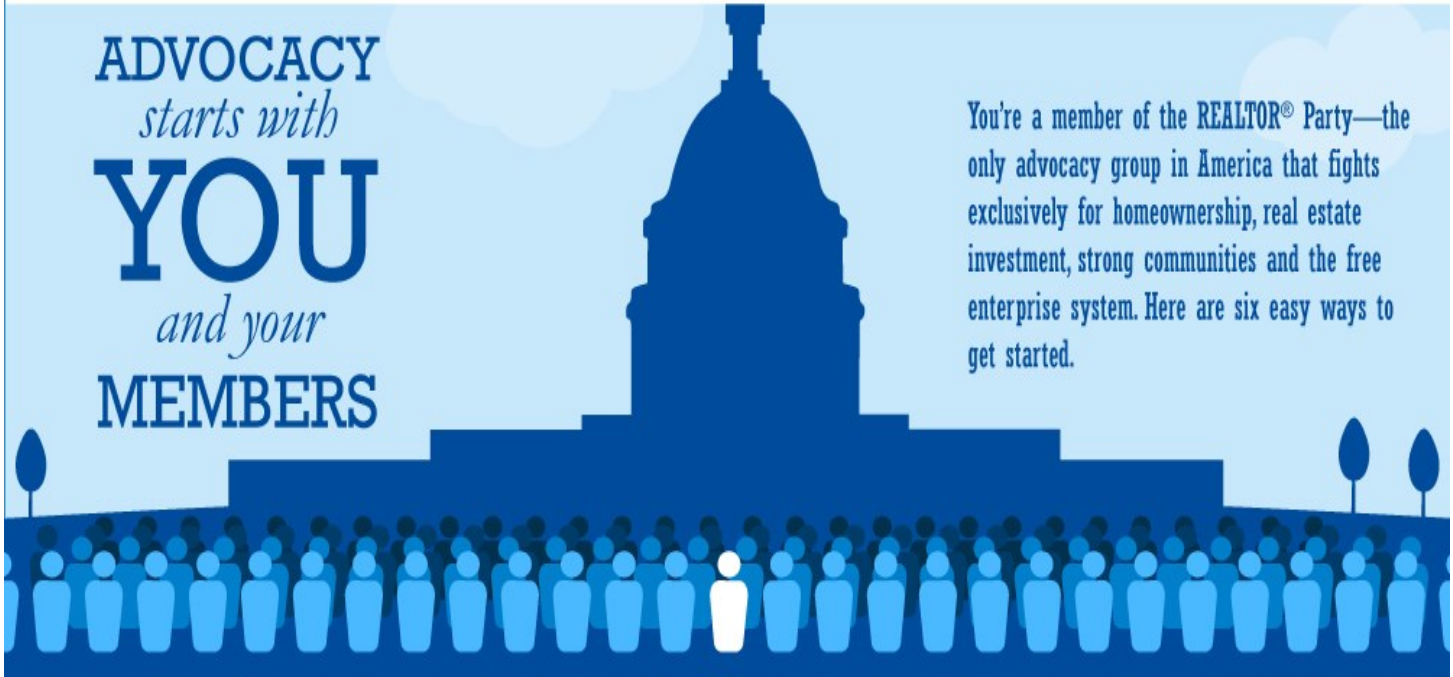
As a Large Donor Council member, you'll have 70% of your \$1000 investment available to you to invest in the candidate of your choice. The remaining 30% (the RPAC portion) 30% goes to NAR, 30% goes to WRA, and the remaining 40% comes back to your Association to support advocacy and candidates at

the state and local level. It's important to remember that NAR and WRA may support a candidate or candidates that you personally disagree with. NAR and WRA support candidates from both sides of the aisle that support real estate issues only.

That's what makes participation in the Large Donor Council a distinct advantage, and an advantage you have over your peers around the nation, you are free to support anyone you choose. Contact Bruce (bruce@ranww.org) or call Sandy Bolgrin at WRA to set up your investment at 800-279-1972.

ADVOCACY
starts with
YOU
and your
MEMBERS

You're a member of the REALTOR® Party—the only advocacy group in America that fights exclusively for homeownership, real estate investment, strong communities and the free enterprise system. Here are six easy ways to get started.



STEP 1	STEP 2	STEP 3	STEP 4	STEP 5	STEP 6
Register To Vote	REALTOR® Party Mobile Alerts	Follow Us	Visit Us Online	Check Your Email	Do Your Research
Our goal is to have as many of our members registered and at their polling place on Election Day as possible	Text REALTOR to 30644 to have national and state calls for action sent directly to your phone	Follow the REALTOR® Party on Facebook and Twitter. Use #REALTORParty in your posts.	Stay tuned to www.realtoractioncenter.com for the latest news and information	The REALTOR® Party News newsletter is sent the 2nd Thursday of the month	Learn who your elected officials are and where they stand on real estate issues

www.realtoractioncenter.com



RANWW

Realtors® Association of Northwestern Wisconsin

BOYCEVILLE RECEIVES NAR SMART GROWTH GRANT

Your Association applied for and received a \$5000 Smart Growth grant for a community branding and Placemaking program for the Village of Boyceville.

The Build A Better Boyceville committee are beginning efforts to develop and revitalize public spaces in the community, set goals, improve quality of life and encourage investment in the community.

The community branding

program will be one part of the overall Placemaking exercise that will begin this summer.

The West Central Wisconsin Regional Planning Commission will facilitate the Placemaking exercise.

Placemaking will identify issues, opportunities and recommendations for up to five public places

within the Boyceville community and steps to take in order to achieve the desired results.

The exercise will use a model developed by the Project for Public Spaces which uses a matrix of four attributes which constitute a great space, sociability, access and linkage, comfort and image and uses and activities.

The final report should be done this fall.

SAVE THE DATES:

May 15-19 NAR Midyear Conference & Expo

June 6th —Open House at the new RANWW/ RANWWMLS Offices

June 21st—RANWW Annual Meeting in Altoona

The success of these events depends on YOUR participation and is a GREAT way for new members to be involved in YOUR Association!!

NEW CAFO PROPOSED FOR TOWN OF CLEVELAND

An application with Chippewa County Zoning shows a \$18 million hog farm to be built in the Chippewa County town of Cleveland near Cornell. The plan, submitted by Four Mile, a subsidiary of Minnesota based Fairmont Veterinary Clinic would house as many as 6500 breeding sows. The farm would produce weaner hogs for farms that would come from

Iowa and Minnesota. The facility would have two other buildings where cows would be raised as replacements for other farming operations.

The operation would be administered by Chippewa County's animal waste ordinance which will require the farm to adhere to standards for storage of manure and spreading of it on area fields. The Wisconsin DNR would

have to approve the plan, with environmental questions answered before they sign off. The permitting process could take six to twelve months.

If the plan is accepted, the county does not have the ability to stop the project, it is required to issue the permits for the operation.

DNR APPROVES FRAC FACILITY

The Department of Natural Resources has approved a frac sand rail terminal in Jackson County, but pending litigation may still derail the project.

The permit would allow the company, OmniTRAX of Colorado to fill in about four acres of wetlands so that they

can construct ten miles of rail along Halls Creek, which feeds into the Black River.

If constructed, the terminal will load 80 or more rail cars every day from mining operations nearby. That sand will be moved to the loading facility by over two miles of conveyor.

The facility will ship over three million tons of sand annually.

The US Corps of Engineering has to sign off on the plan, and a court hearing aimed at stopping the plant will be decided on May 14th. The federal permit will be made this summer.

*Call Sandy Bolgrin
at WRA to set
up your LDC
membership:*

800-279-1972



LARGE DONOR COUNCIL

SPECIAL LDC SIGNING PERIOD

RANWW is looking to expand our number of Large Donor Council members. This is a way for you to join, spread your investment out over several months, and receive the perks of LDC membership as soon as you agree to be an LDC.

Investment is \$1000, you can use what has accrued in your account to support local, state or federal candidates. LDCs are \$700 for your use and \$300 to RPAC.

Contact Bruce (bruce@ranww.org) or call Sandy @ WRA to set it up. 800-279-1972

PAYMENT PLANS ARE AVAILABLE!!!!



REALTORS® POLITICAL ACTION COMMITTEE
SPECIAL DIRECT GIVER SIGNING PERIOD

\$100 A Month/6 Months

RANWW is looking to build the number of Direct Givers. Instead of paying hundreds all at once, this is a way to spread your investment out over six months, and have a source of dollars to support candidates at the local, state or federal level.

2018 will be a huge year politically, your participation will be essential!!

The investment is \$100 a month for six months charged monthly to your credit or debit card. 100% of your investment can be used to support candidates for any elected office, local, state or federal.

Contact Bruce King (bruce@ranww.org) to sign up or call Sandy Bolgrin at WRA to set up your payment at 800-279-1972.



**REALTORS® ASSOCIATION
OF NORTHWESTERN
WISCONSIN**

1903 Keith Street
Suite #3
Eau Claire, WI 54701

Phone: 715-828-1976 home office/text
Phone: 715-835-0923 board office
E-mail: bruce@ranww.org

Bruce King
Government Affairs Director

WWW.RANWW.ORG

“OUR MISSION IS TO HELP OUR
MEMBERS BE MORE SUCCESSFUL IN
REAL ESTATE”

The REALTORS® Association of Northwestern Wisconsin is the largest association in terms of area, stretching from Millston, Whitehall and Fountain City to the south all the way to central Bayfield and southern Ashland county to the north. We are the fourth largest of the 19 Associations in terms of membership. Your Association covers 375 units of local government, monitoring a wide variety of issues that can and do affect you. In addition to local government, your GAD also monitor issues at the state and national level that will have a direct or indirect impact on housing and the industry, as well as legislation that can affect the consumer. Your Government Affairs Director works with members and affiliates to raise investment dollars for RPAC that help to support elected officials that support your business. RANWW is one of only three REALTOR® Association’s in Wisconsin that have their own PAC, which was started 39 years ago to support candidates at the local and state level. We maintain a Facebook page, called “The GADabouts”, that aims to keep you up to date on political issues that will affect your business. Your GAD also produces a periodic government affairs program posted on our YouTube channel, RANWWTV!!



MY THOUGHTS—BY BRUCE KING

Now that it looks like winter has *finally* left Wisconsin, we can shift gears into the other season...politics.

Candidates are out getting signatures on their nomination forms so they can be on the ballot for November. Wisconsin will once again be one of the premier states that will be watched for trends of either a “blue wave” or maintaining the current leadership.

In our Association, we have rare open seats in the 23rd and 31st Senate districts as well as the 68th and 91st Assembly districts. WRA has

launched their Large Donor Council membership drive with a very ambitious goal: 350 LDCs, a 25% increase from last year.

It’s an investment of \$1000 or more, can be paid over time, with \$700 available to you to invest as you see fit, and 40% of the remaining \$300 RPAC investment returning to your Association’s PAC.

Speaking of the Association, we recently got a little bigger. I sometimes affectionately refer to RANWW as “the Ponderosa” as we are the largest Association by area and fourth largest by

membership. We have extended our jurisdiction another tier of counties north into Bayfield County and have roughly the southern third of Ashland County (think Clam Lake and Butter-nut).

While the Association gets bigger, so does our office space. Our new office location on Mall Drive is double our current size, the conference room is also double, allowing for more options for the members and the public to use.

Be sure to join us for an Open House and ribbon cutting on Wednesday June 6th.

